

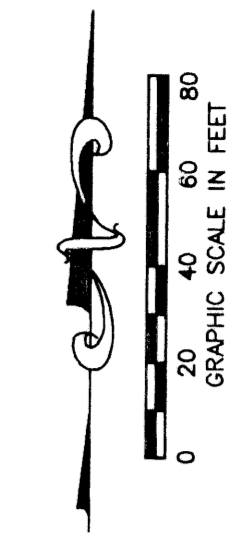
ADDISON RESERVE PARCEL TWELVE

PART OF GLENEAGLES/POLO CLUB WEST P.U.D.
BEING A REPLAT OF TRACT 12
"ADDISON RESERVE PLAT FOUR"
(P.B. 79, PGS. 76-81)
SITUATE IN SECTION 28, TOWNSHIP 46 SOUTH, RANGE 42 EAST
PALM BEACH COUNTY, FLORIDA
MARCH, 1999 SHEET 2 OF 3

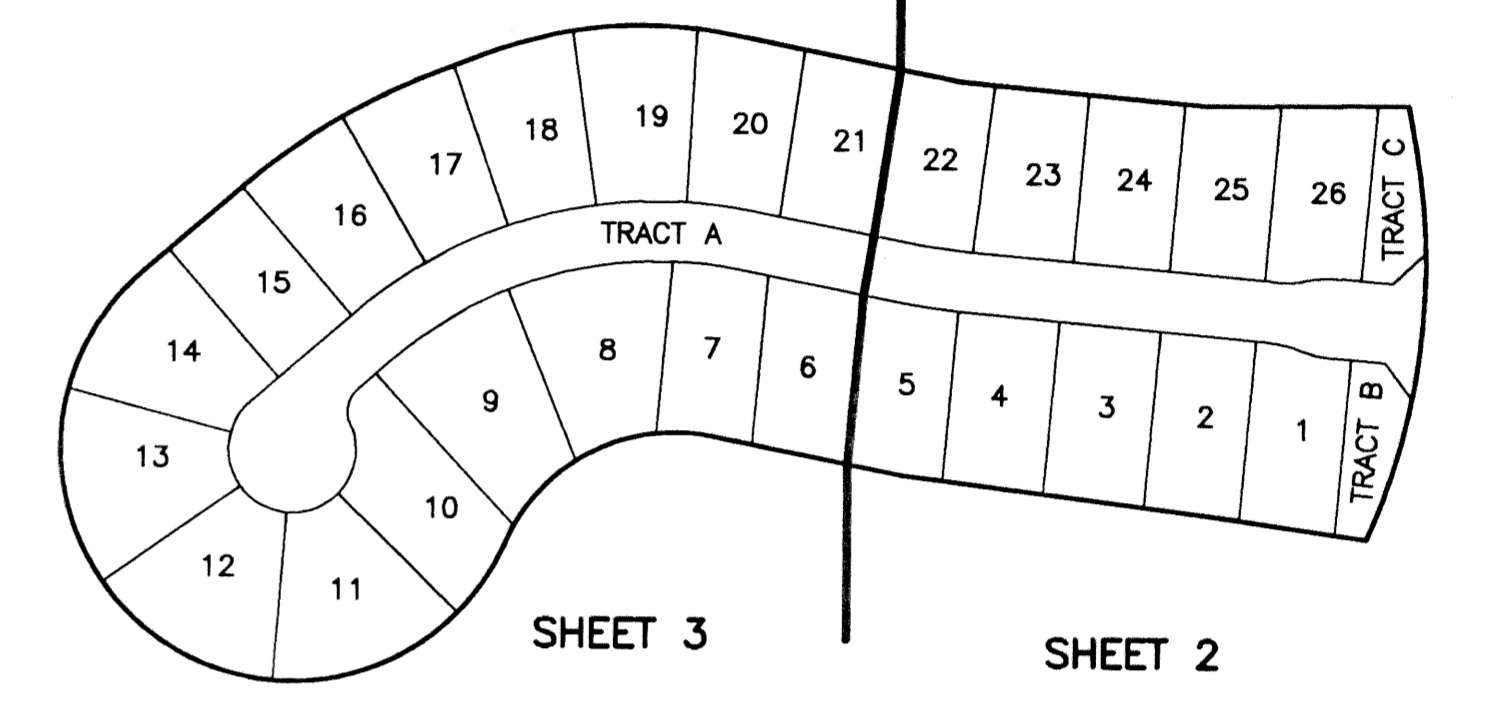
140

STATE OF FLORIDA
COUNTY OF PALM BEACH

THIS PLAT WAS FILED FOR
RECORD _____ DAY OF _____
AD, 1999 AND DULY RECORDED
IN PLAT BOOK _____ ON PAGES
_____ AND _____
DOROTHY H. WILKEN, CLERK
BY: _____, D.C.



CIRCUIT COURT SEAL



SHEET LOCATION MAP
NOT TO SCALE

LEGEND

- BE BUFFER EASEMENT
- Δ CENTRAL (DELTA) ANGLE
- CH CHORD
- DE DRAINAGE EASEMENT
- FPL FLORIDA POWER & LIGHT
- L ARC LENGTH
- LAE LIMITED ACCESS EASEMENT
- LE LANDSCAPE EASEMENT
- LME LAKE MAINTENANCE EASEMENT
- LMAE LAKE MAINTENANCE ACCESS EASEMENT
- LWDD LAKE WORTH DRAINAGE DISTRICT
- (NR) NON-RADIAL
- OHME OVERHANG AND MAINTENANCE EASEMENT
- ORB OFFICIAL RECORD BOOK
- PB PLAT BOOK
- PG(S) PAGE(S)
- PUD PLANNED UNIT DEVELOPMENT
- R RADIUS
- (TYP) TYPICAL
- UE UTILITY EASEMENT
- FOUND PLS# 4763
- PERMANENT REFERENCE MONUMENT
- SET PLS# 4763
- PERMANENT CONTROL POINT
- SET PLS# 4763
- ⊙ CENTERLINE

NOTES:

1. THE COORDINATES SHOWN HEREON ARE STATE PLANE GRID COORDINATES ACCORDING TO THE TRANSVERSE MERCATOR PROJECTION OF THE FLORIDA EAST ZONE, N.A.D. 83, PER THE 1990 ADJUSTMENT.
2. THE LINEAR DIMENSIONS SHOWN HEREON ARE GROUND DISTANCES IN U.S. FEET AND DECIMAL PARTS THEREOF.
3. THE GROUND DISTANCE TO GRID DISTANCE SCALE FACTOR IS 1.0000338 (GROUND DISTANCE X SCALE FACTOR = GRID DISTANCE).
4. ALL LINES WHICH INTERSECT CURVES ARE RADIAL TO THOSE CURVES UNLESS OTHERWISE NOTED.

Palm Beach County Control Point "GATTO"
Brass Disc in Concrete
N 763501.6313
E 928321.8927

Palm Beach County Control Point "GAST"
Brass Disc in Concrete
N 763538.3000
E 931367.3500

S89°18'37"W (GRID) 3045.57'

S84°53'14"E (Plot) 00°00'15" Bearing
S84°52'59"E (Grid) = Clockwise Rotation
(Plot to Grid)

A PORTION OF THE NORTH LINE OF TRACT 12 ADDISON RESERVE PLAT FOUR PB 79, PGS 76-81

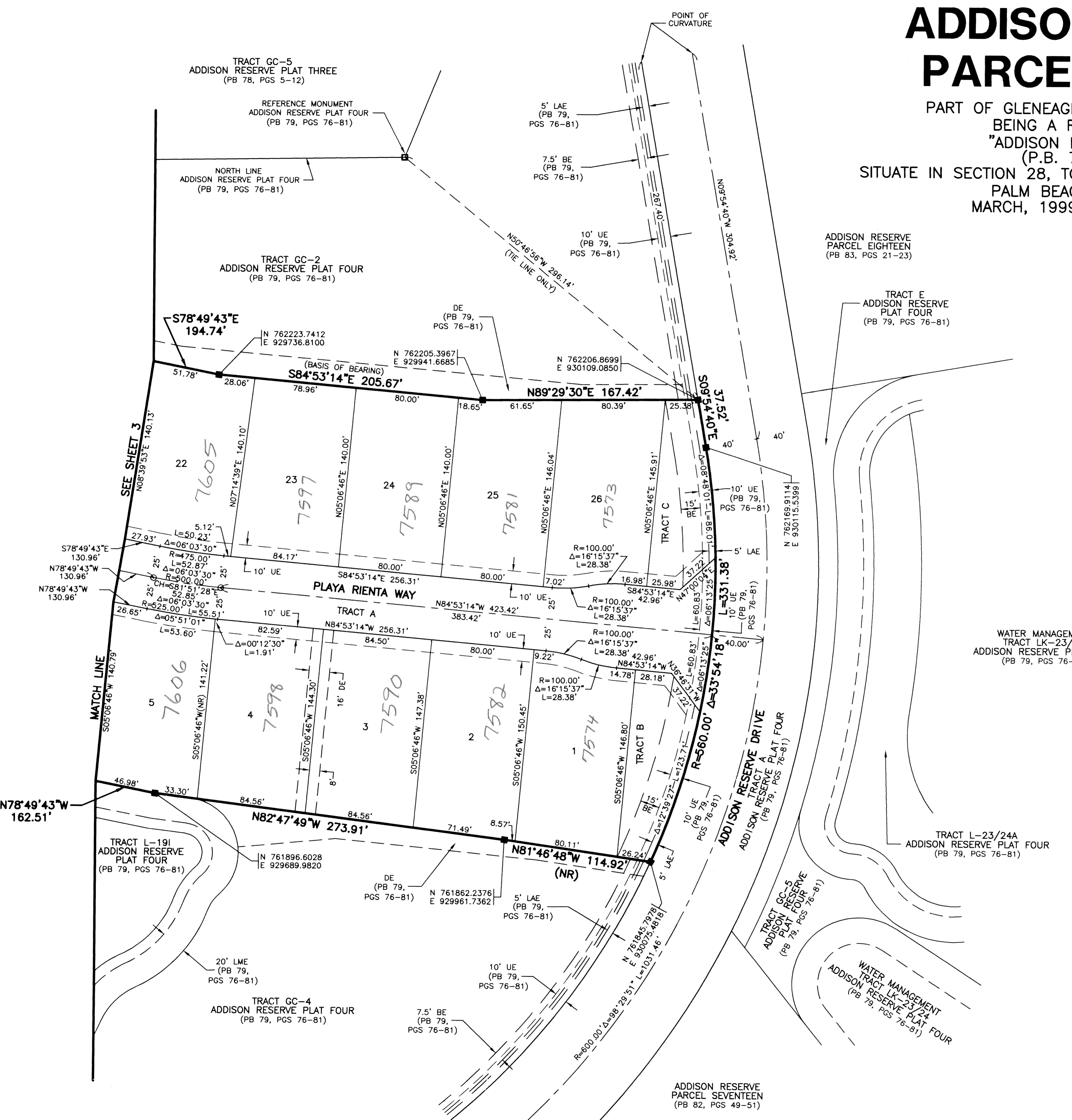
THIS INSTRUMENT WAS PREPARED BY MARY HANNA CLODFELTER, P.S.M. IN THE OFFICES OF MOCK, ROOS & ASSOCIATES, INC., 5720 CORPORATE WAY, WEST PALM BEACH, FLORIDA 33407.

SCALE: 1" = 40'
P.A. NO.: 94182.35
DATE: MARCH 1999
DRAWING NO. 46-42-28-182

MOCK • ROOS
ENGINEERS • SURVEYORS • PLANNERS

5720 Corporate Way, West Palm Beach, Florida 33407
(561) 683-3113, fax 478-7248

**ADDISON RESERVE
PARCEL TWELVE**
PART OF GLENEAGLES/POLO CLUB WEST P.U.D.
BEING A REPLAT OF TRACT 12
"ADDISON RESERVE PLAT FOUR"
(P.B. 79, PGS. 76-81)
SITUATE IN SECTION 28, TOWNSHIP 46 SOUTH, RANGE 42 EAST
PALM BEACH COUNTY, FLORIDA



ADDISON RESERVE
PAGE 140
FLOOD MAP # 356A
ZONING RTSISE
QUAD # 52
SE 80-215
TAZ 478
PUD NAME Polo Club West

K:\140\140\TWCADD\ADDIRP53.dwg 05/13/99 01:12:53 PM EDT

REV.: 05-03-99
CAD FILE:
TWCADD\ADDIRP53